



# ***BangkaPro***

**Now everyone can go boating!**

☎ (2)8243.3970

✉ info@bangkapro.com

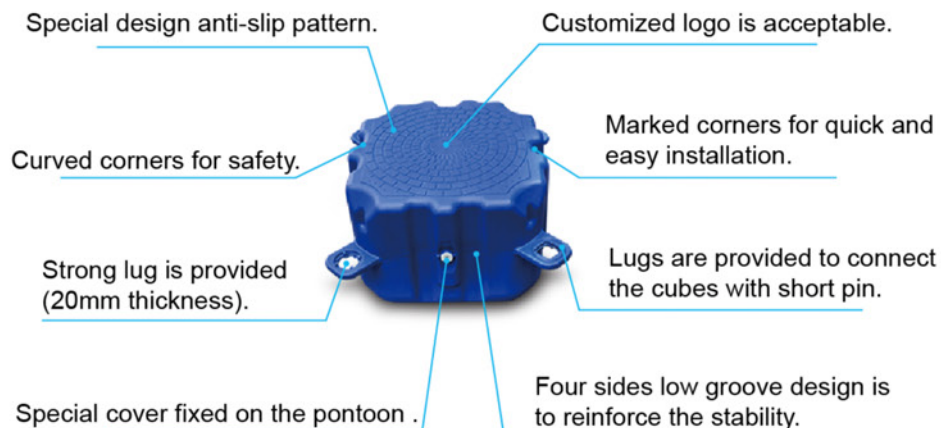
🌐 www.bangkapro.com

🏠 RSTI Compound, Km.16, Pamplona 1, Alabang-Zapote Rd.  
Las Piñas City

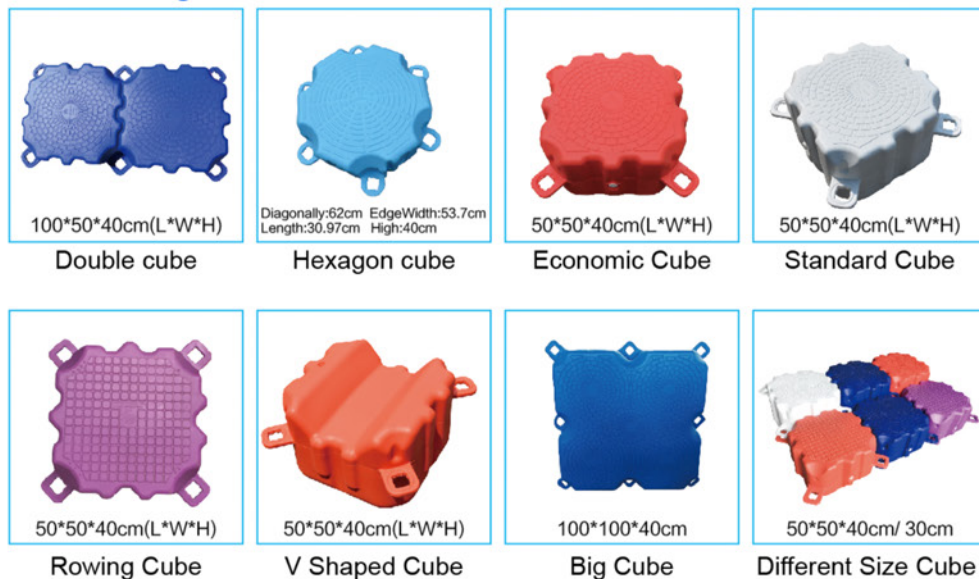


## **PROFESSIONAL MARINE DOCKS SUPPLIER**

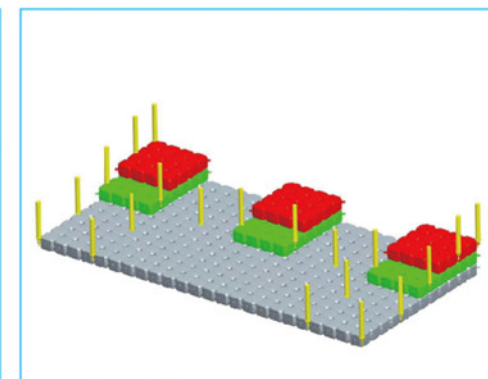
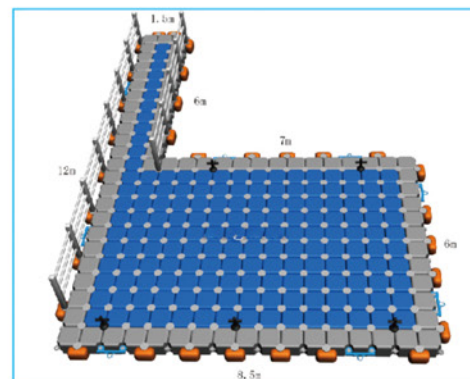
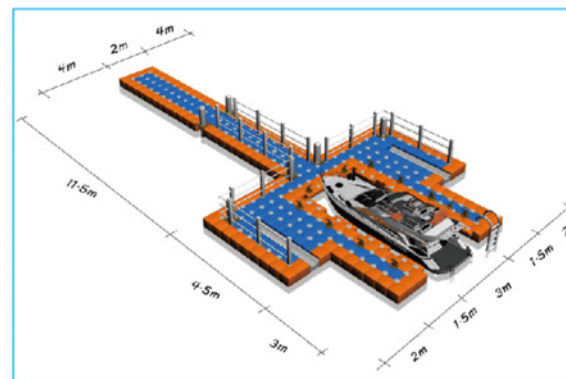
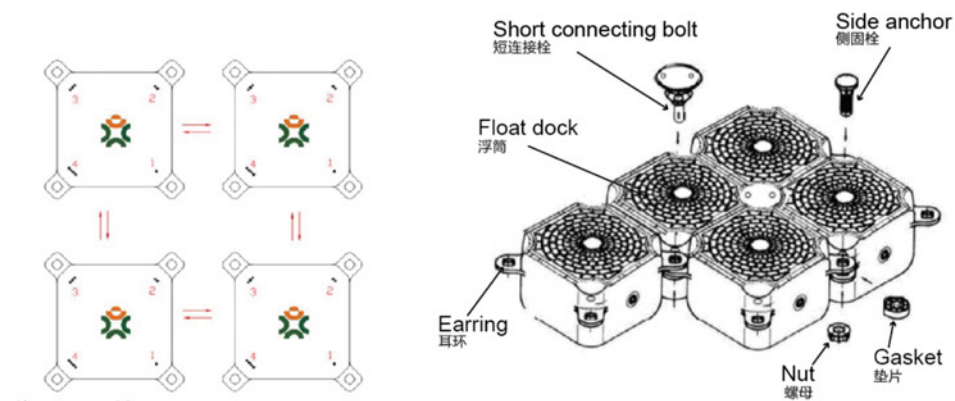
## PE MODULAR DOCKS



### Different Color Size Floating Cube



### Floating Cube Drawing and 3D Drawing Show



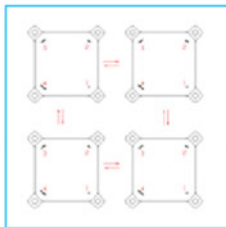


## How to Install ?

1

Install the cubes

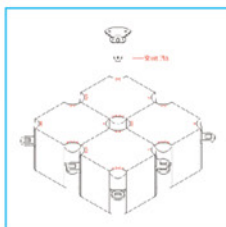
Arrange the cubes point in the same direction.



2

Install the short pin

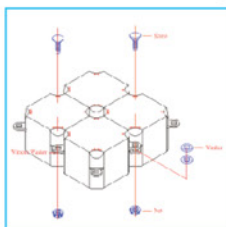
Insert the short pin, use the assemble tool to rotate the pin with 45 degrees.



3

Install the short screw & nut

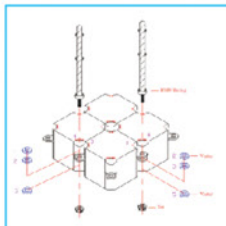
Insert the screw into the lug. And secure it with the nuts and washer.



4

Install the HDPE railings

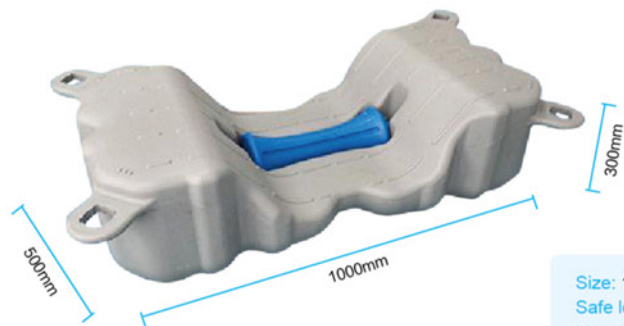
Insert the bottom of the HDPE railing and rotate it 45 degrees to lock it.





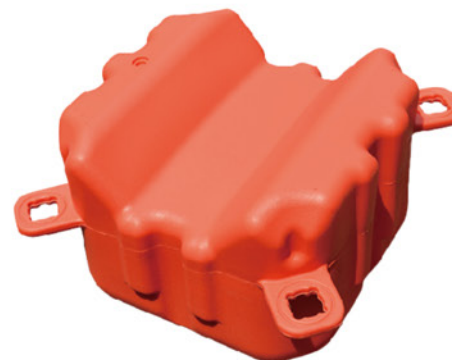
## Float with rollers

BANGKAPRO and its partners have rich experience of 10 years floating dock marina pontoon market all over the world. the float with rollers can building drive on dock, jet ski dock parking yacht boat and jet ski and so on. it is very stable and easy drive on dock.

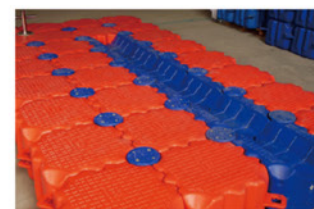
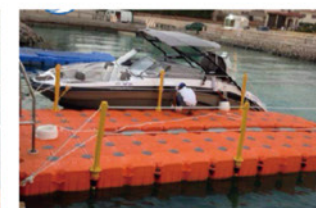


Size: 1000(L) x 500 (W) x 300 (H) mm  
Safe loading: 350kg/sqm  
Material: High Density Polyethylene  
Color: Blue,Orange,Gray,Black or customized

## V Shaped Cube



Size: 500(L) x 500 (W) x 400 (H) mm  
Safe loading: 350kg/sqm  
Material: High Density Polyethylene  
Color: Blue,Orange,Gray,Black or customized





## Multifunction float



### MULTIFUNCTION FLOAT WITH TOP COVER

Size: 50\*50\*40cm

Safe loading: 350kg/sqm

Material: High Density Polyethylene

Color: Blue, Orange, Gray, Black or customized



## Floating House

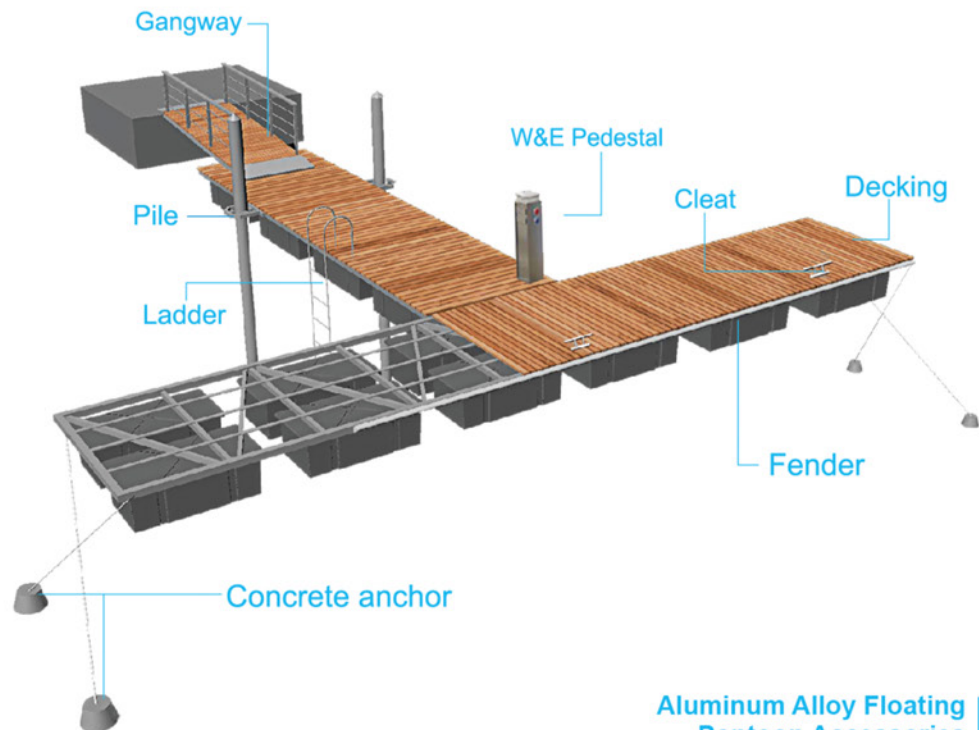


## Floating Multifunction float Project Case





## ALUMINUM WITH PE PONTON AND DECKING DOCKS



### Aluminum Alloy Floating Pontoon Accessories



Railing ( 304SS)



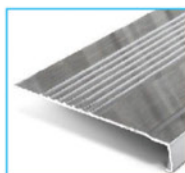
Railing



Aluminum alloy frame



316SS, 5  
ton Cleat



Aluminum cable cover



Pile guid  
customized size



Rubber fender



Water & electricity box



Pile cap

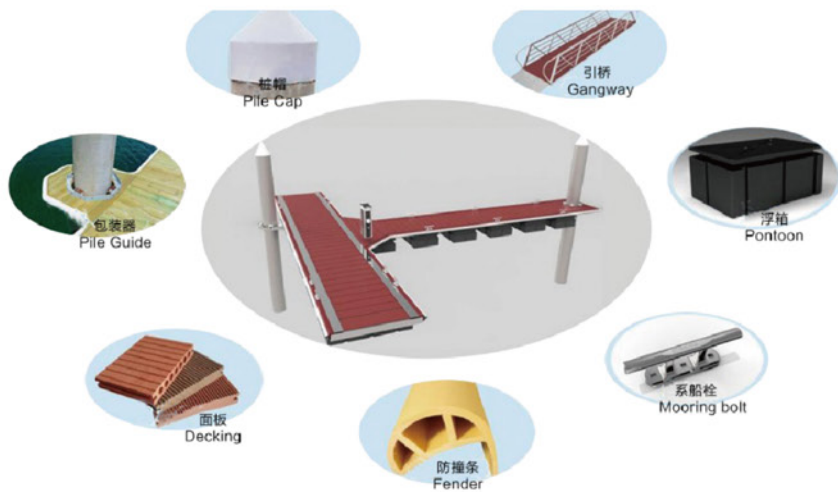


Conner fender





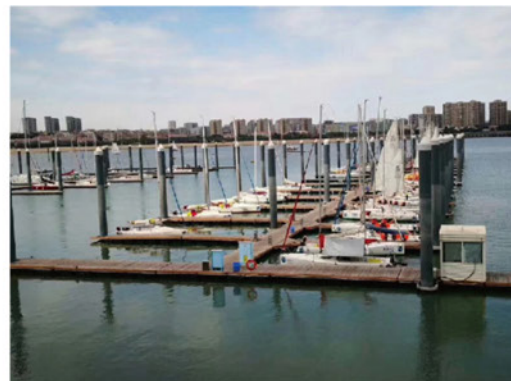
## Hot Dip Galvanized Steel Floating Pontoon



## Hot Dip Galvanized Steel Floating Pontoon 3D drawing



## Hot Dip Galvanized Steel Floating Pontoon Project Case





## PE PONTOON

The pontoon shell is made of high-density polyethylene resin (HDPE), and it is molded in one-time and seamless. Anti-ultraviolet substances are added, and strong anticorrosive coatings are applied on the surface. The material is sufficient to withstand the impact of sea waves, natural environment changes and low temperature attack. This material must comply with FDA 21 standards. It is food-grade, does not pollute water quality,

and can be recycled.

The 746C grade and UL-94HB flame tests show that the use of the product is related to strong sunlight, water immersion and other environments, and meets the requirements for flame retardancy. HUNT heavy object impact and puncture tests have also been performed, showing that the material can be used under wave impact, ice impact, and petroleum product corrosion.

### Parameter

**Size :** 1200x800x550mm(L\*W\*H)  
1400x900x600mm(L\*W\*H)

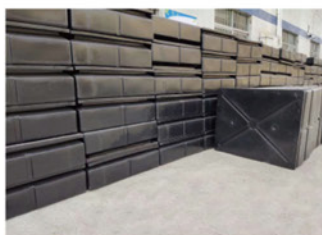
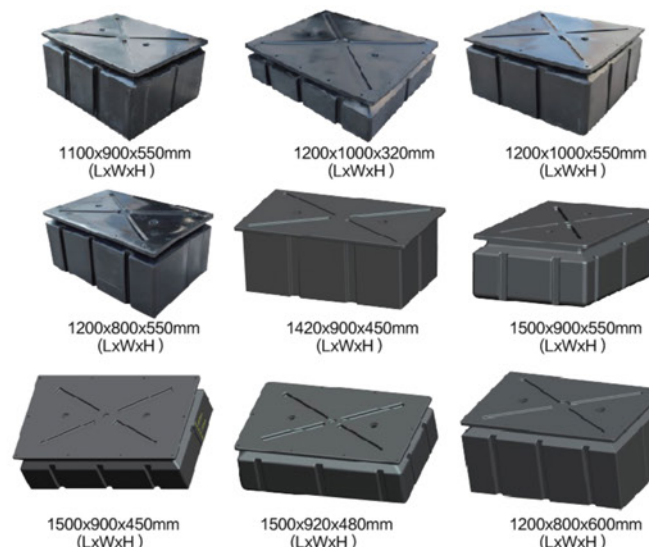
**Material:** Polyethylene (import)

**Crafts:** Case rotational molding,  
EPS foam padding inside

**Buoyancy:** 450kg/650kg

**Net. Weight:** 35kg/45kg

**Advantage:** Non-toxic, environment friendly ,  
good toughness, anti-distortion, corrosion  
resistance, low permeability, strong buoyancy

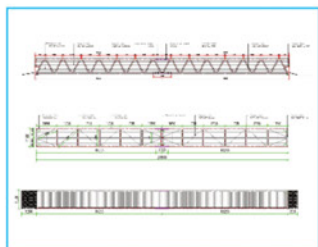




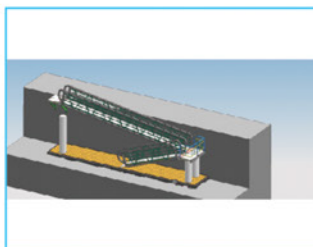
## Aluminum Alloy Floating Gangway

- 1.Compose: gangway is consisted of aluminum alloy frame, handrails, decking, rolls,ect
- 2.Decking:24mm thickness board with grooved anti-slippery surface fixed by 316L stainless bolts and screws. The material can be WPC or other imported woods.
- 3.The main advantages are elegant,long life span,a shortened installation time and much lower maintenance cost.
- 4.Strong Loading capacibility,safe and stable,environmentally friendly,UV resistant.
- 5.The flexibility design make it can adjust to the water level change: the gangway is with wheels, so that it can adjust the changing water level.
6. Connection on the quay: Rotatable hot dip galvanized steel platform fixed by concrete expansion screws

## Aluminum Alloy Floating Gangway Production Process



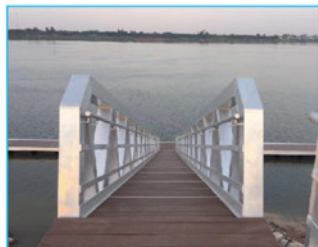
Gangway Drawing



3D drawing



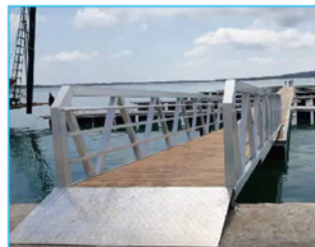
Gangway Production Process



Install Gangway

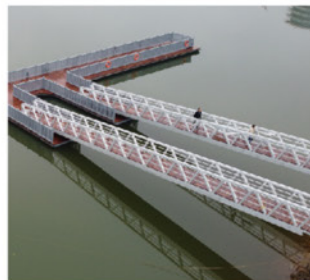


Aluminum Alloy Project Case



Gangway Engineering Case

## Aluminum Alloy Floating Gangway Project Case





## Concrete Floating Pontoon

### Construction of concrete floating breakwater description

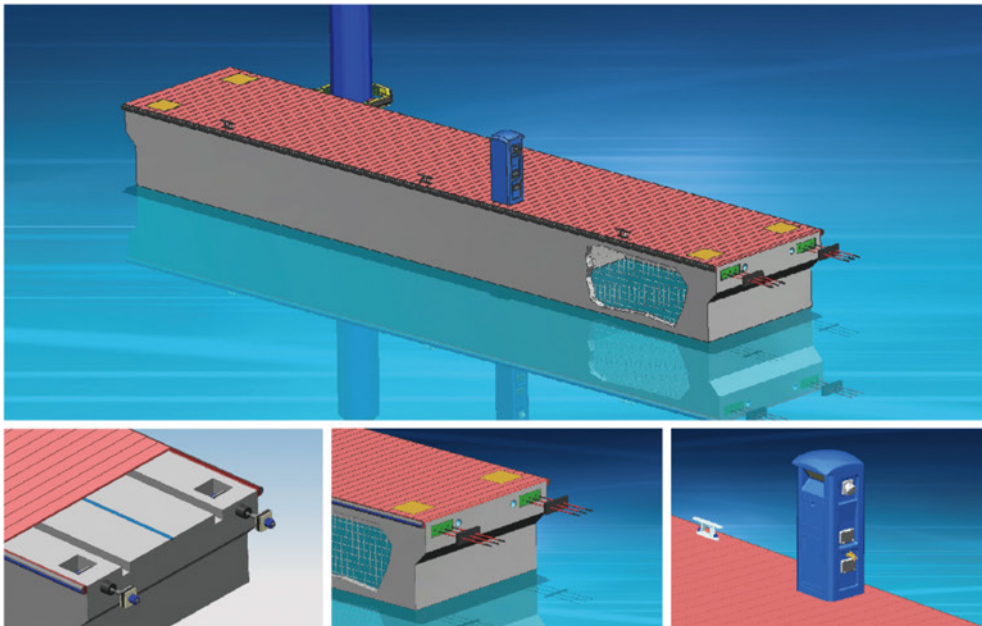
**Pontoon description:** the heavy weight of the pontoon makes it extremely stable. With effective wave dampening characteristics. It can be used universally even in semi-sheltered locations. Where there is a requirement for high quality and stability. **Buoyancy :** the styrofoam filled concrete pontoon produces very high buoyancy that makes it virtually unsinkable. It is practically maintenance-free and has little or no impact upon nature and the environment. **Decking and electrical and water :** each standard pontoon is designed to accept electrical and water supply services in the two sides of the walkway. Pontoon includes two side-ducts to host the pipes

and cables. They are covered with aluminum or hard exotic wood boards which can be easily removed for maintenance or for installation of new equipments. For a better appearance, the decking of walkway can be done with washed cobblestone. / decking consists of treated concrete with anti-slip finishing or hard exotic wooden staves.

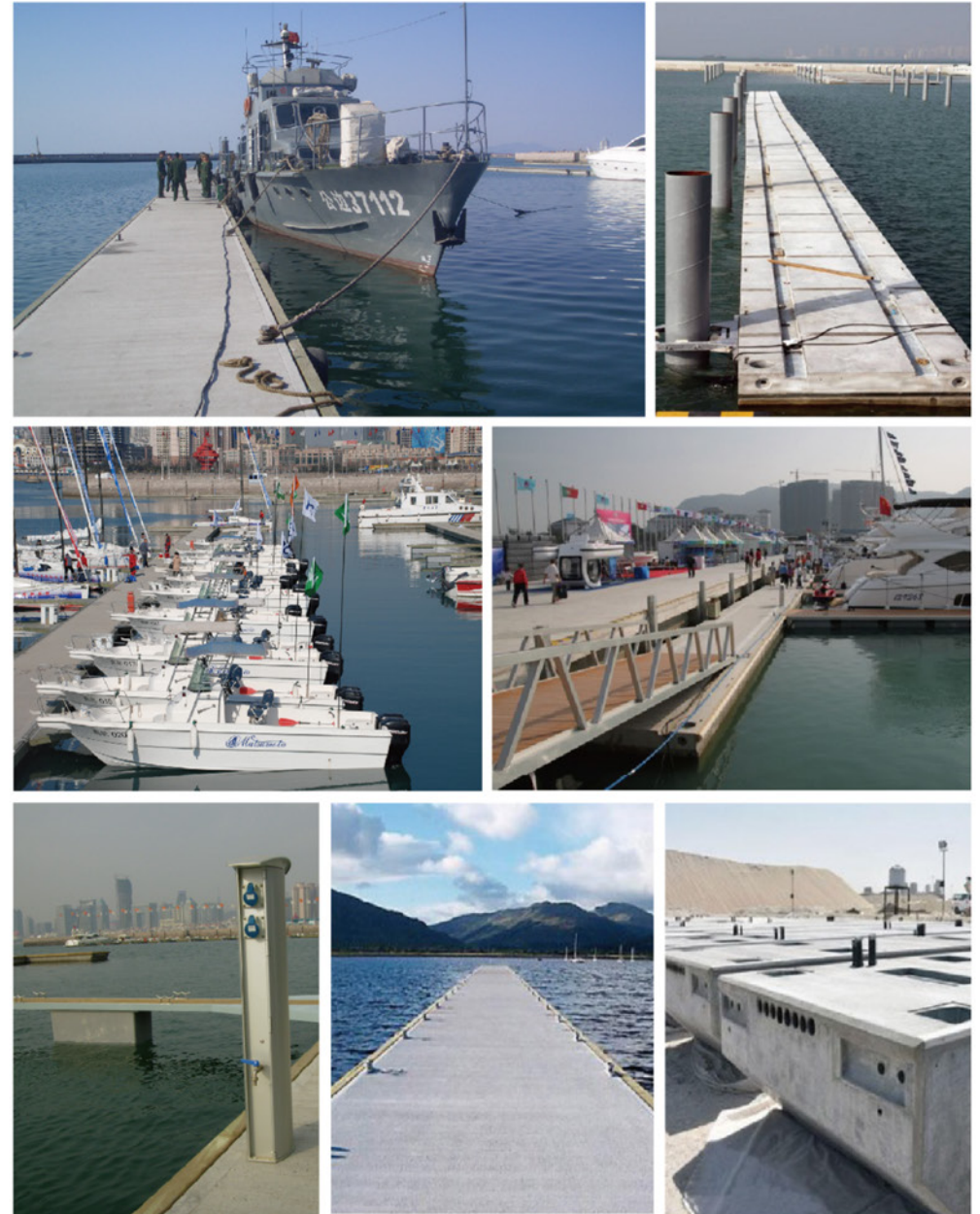
**Mooring :** the pontoons would be moored by chains and blocks or piles. With the semi-elastic silent-block system. The pontoons can be easily connected together.

**Freeboard : 55mm**

**Loading capacity : 180KG /Square meter.**



### Concrete Floating Pontoon Project Case





## Floating Sea Barrier / Breakwater

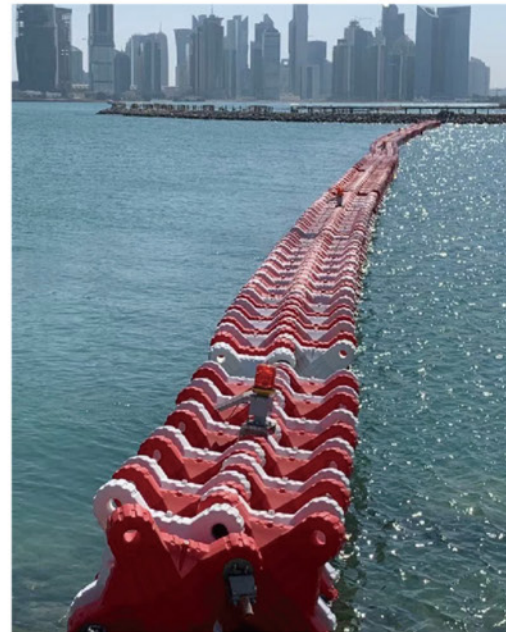
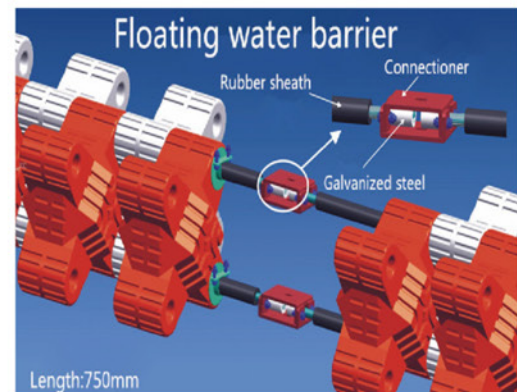


### Floating sea barrier details:

- 1.Material: HDPE
- 2.Size: 770\*770\*280mm
- 3.Five star shape
- 4.Color: red / white as client required.
- 5.Hot dip galvanized steel with accessories connected float.



### Install Floating Sea Barrier Drawing and Sample





## Aluminum Alloy Floating Pontoon Accessories



Railing ( 304SS)



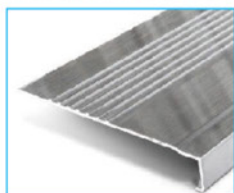
Railing  
(Galvanized steel with painting )



316SS, 5 ton Cleat



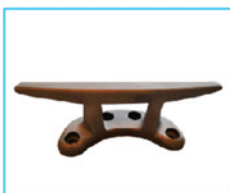
Aluminum, 5 ton Cleat



Aluminum cable cover



Pile guid, customized size



10t , aluminum cleat



10t , 316 SS cleat



Rubber fender



Water & electricity box



Pile cap



Conner fender

## Plastic Floating Cube Dock Accessories



Screw and nut



HDPE screw with ring



Long screw  
with steel plat



Long screw



Pin with steel plate



Steel angle short pin



Short pin with nut



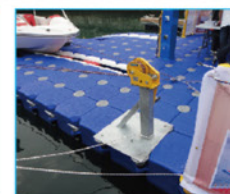
Short pin



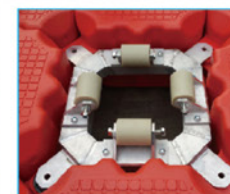
Steel pile guide



Aluminum railing



Hand winch



Aluminum pile guide



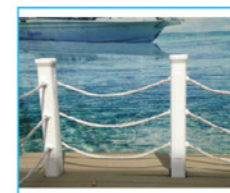
Galvanized steel railing



Stainless steel railing



Side Railing



HDPE railing



Fender



Screw and nut



Double cleat



Bollard



Washer



Water electricity pedenstal



WPC decking



Iron Anchor



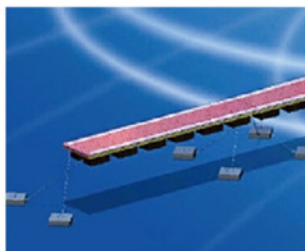
## Mooring Systems



Pile mooring solution



Pole mooring solution



Anchor mooring solution



Seaflex mooring system



Dualocker mooring system

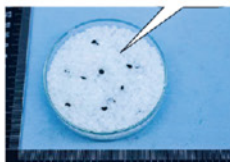


Joist steel mooring system

## Technological Process

### Blow Molding

It is a process for moulding single-piece plastic objects in which a thermoplastic is extruded into a split mould and blown against its sides.



1

The raw HDPE, plastic color masterbatch, UV powder mixed in a predetermined ratio, stirring evenly.



2

The HDPE is melted and extruded into a hollow tube (a parison). This parison is captured by closing it into a cooled metal mold



3

Air is then blown into the parison, inflating it into the shape of the cube. After the HDPE has cooled sufficiently, the mold is opened and the cube is ejected



4

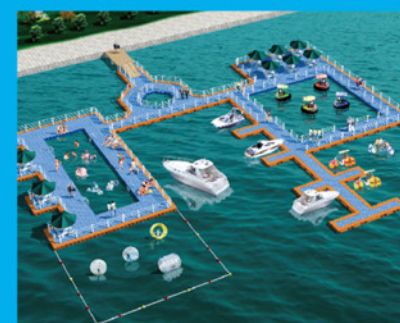
There is an excess of material due to the molding process. This is trimmed off by a knife around the container which cuts the material away. And then block the cube with a plug, and the pontoon is completed.

## BangkaPro Docks Services



### Technical Info Analysis

The buyer provides the project background and environment data, such as shore type, lowest and highest water level, wind velocity, water variation, wave height, the location, the picture or video of the location, CAD will be better.



### Professional Drawing

According to the information that the buyer offered, we can offer you a professional drawing and quotation.



### Installation Guide

We can offer installation video or installation manual. For some certain projects, we also will send the technician to your country to guide the installation.



### 24/7 After-Sale Service

We will offer 24/7 after-sale service, you can contact us at any time via phone, email, WhatsApp, and Wechat.



## Life saving products







Marnolin life jacket buoyancy parameter

No.	User	Size	Body Weight	Maximum human buoyancy	Maximum bearing buoyancy	
1	Kids	S	15-25KG	≥400N	64N	6.5KG
2		M	25-40KG	≥550N	80N	8.2KG
3	Adults	L	40-60KG	≥800N	117N	11.9KG
4		XL	60-80KG	≥950N	135N	13.7KG

Remark: life jacket size can be customized.

## Lifesaving supplies



First aid kit



Life stretcher



Life stretcher



lifeguard chair



lifeguard chair



Lifesaving hook



Life buoy



Life buoy



Life buoy



Lifesaving buoy



Lifesaving Rope



Lifesaving hook



## PE MODULAR DOCKS PROJECT CASES





# BangkaPro

Now everyone can go boating!

PROFESSIONAL MARINE DOCKS SUPPLIER



[www.bangkapro.com](http://www.bangkapro.com)



[info@bangkapro.com](mailto:info@bangkapro.com)



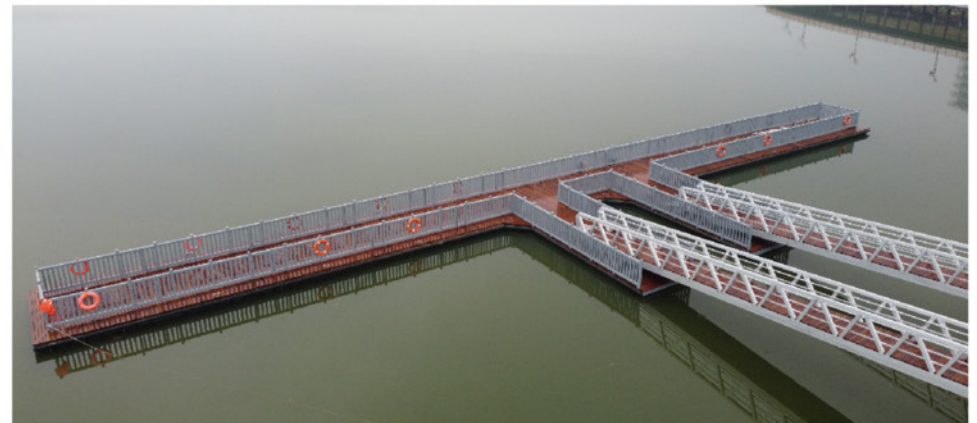
(2) 8243.3970



## ALUMINUM + PE PONTOON PROJECT CASES









# BangkaPro

Now everyone can go boating!

PROFESSIONAL MARINE DOCKS SUPPLIER

